

PRESS RELEASE: March 2021
Newlyn Society of Artists (NSA)



Looking Forward

An exhibition of NSA members' new work

Tremenheere Gallery

**Tremenheere Sculpture Gardens, Gulval, Penzance, Cornwall TR20 8YL
Sat 19 June – Sun 11 July 2021, subject to government guidelines**

'After a year of being locked-down, shut-down and closed in, this show is a chance to reflect on past experiences, or look to the future and expand our horizons... Art can give us a way to explore our own souls – there has been a powerful energy in the NSA during these times of change and we'd like to invite people to come and share this. In the beautiful space of Tremenheere Gallery, you will undoubtedly find 'Looking Forward' thoughtful, serious, joyful, sometimes playful... and up-lifting', Yolande Armstrong, Chair of the NSA.

This exhibition is the latest in a must-see programme by West Cornwall's historic Newlyn Society of Artists and will run for three weeks at Tremenheere Gallery. Work features a wide variety of media, including painting, sculpture, film and installation.

Tremenheere Gallery is set in a stunning location, has free parking, plenty of space, gardens to visit and a cafe.

Although the gallery can currently only permit six visitors at a time downstairs and four upstairs, last October's NSA exhibition 'Edge of Dark', was hugely successful, with good sales, a steady stream of visitors and fantastic feedback.

Admission to the gallery is free. For opening times and more information see: www.tremenheere.co.uk

For more information on artists talks or on-line events visit: www.nsanewlyn.com



Andrew Swan, 'Blondins Luck'. Double-sided etching.



Gordon Ellis-Brown. 'Don't Look Back in Anger'. Collage, pigment, mixed media.

Newlyn Society of Artists

Founded in 1896, the NSA are celebrating their 125-year anniversary. Established by an influential group of artists, the NSA today is a diverse group of approximately 90 contemporary artists working across all disciplines from painting and sculpture to performance, the moving image and more. The NSA is run by an annually elected voluntary committee, who continue to seek new opportunities and welcome new membership applications. In 2017, the NSA began an exciting new partnership with Tremeneere Sculpture Gardens, whose beautiful gallery space is the venue for their twice-yearly exhibitions.

Further info

For further press information OR high res images please contact:

Yolande Armstrong | yolandebigfish@yahoo.co.uk | +44 (0)7549 452403

Images: https://www.dropbox.com/home/NSA_LookingForward_high_res_images

Links

www.nsanewlyn.com

Instagram: @nsanewlyn

Facebook: @NewlynSocietyOfArtists or www.facebook.com/NewlynSocietyOfArtists

www.tremeneere.co.uk

www.penzanceartfestival.co.uk

WATCH THIS SPACE...

The NSA are proud to be part of Penzance Arts Festival 2021 – PZ21/Create

Friday 4 – Sunday 20 June, 2021

(NSA taking part: from Sat 12 – Fri 18 June)

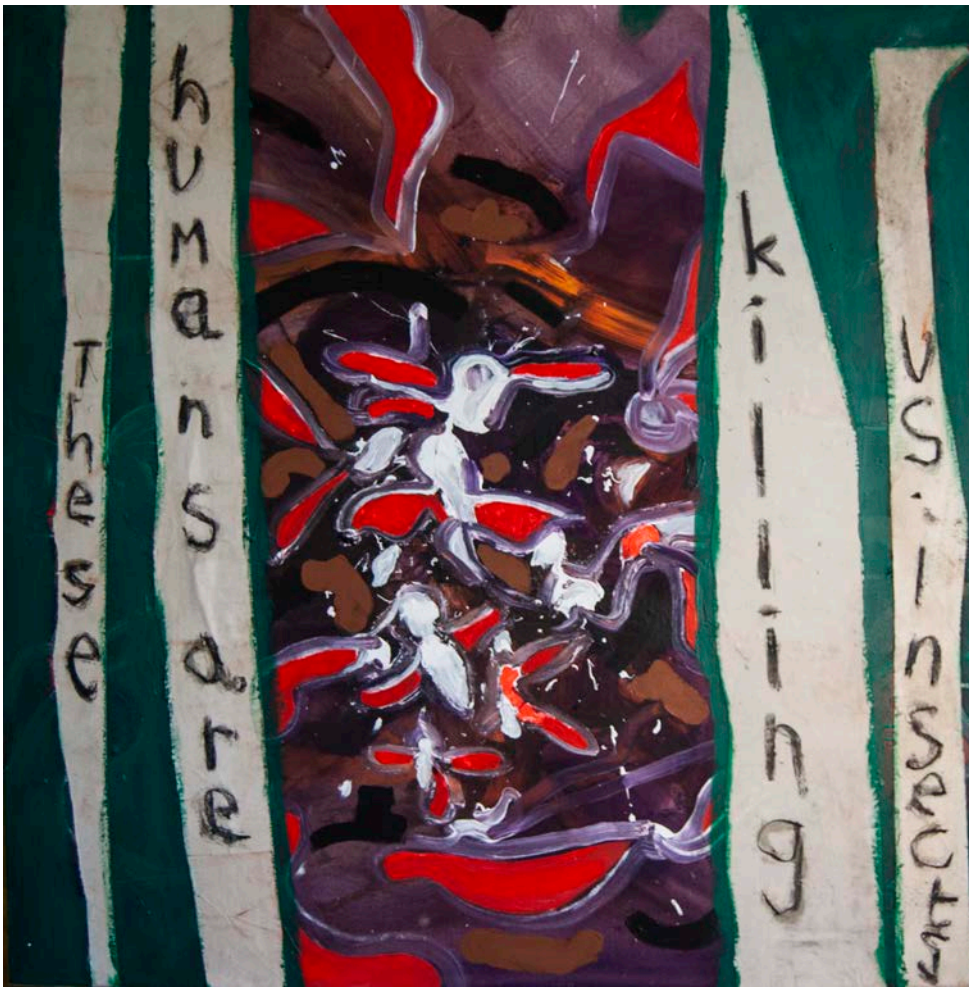
For more information visit:

<https://penzanceartfestival.co.uk/penzance-festival-of-art/>

See also What's On Timetable:

<https://penzanceartfestival.co.uk/events/month/2021-06/>

The website will be updated as things progress. You can subscribe to receive updates.



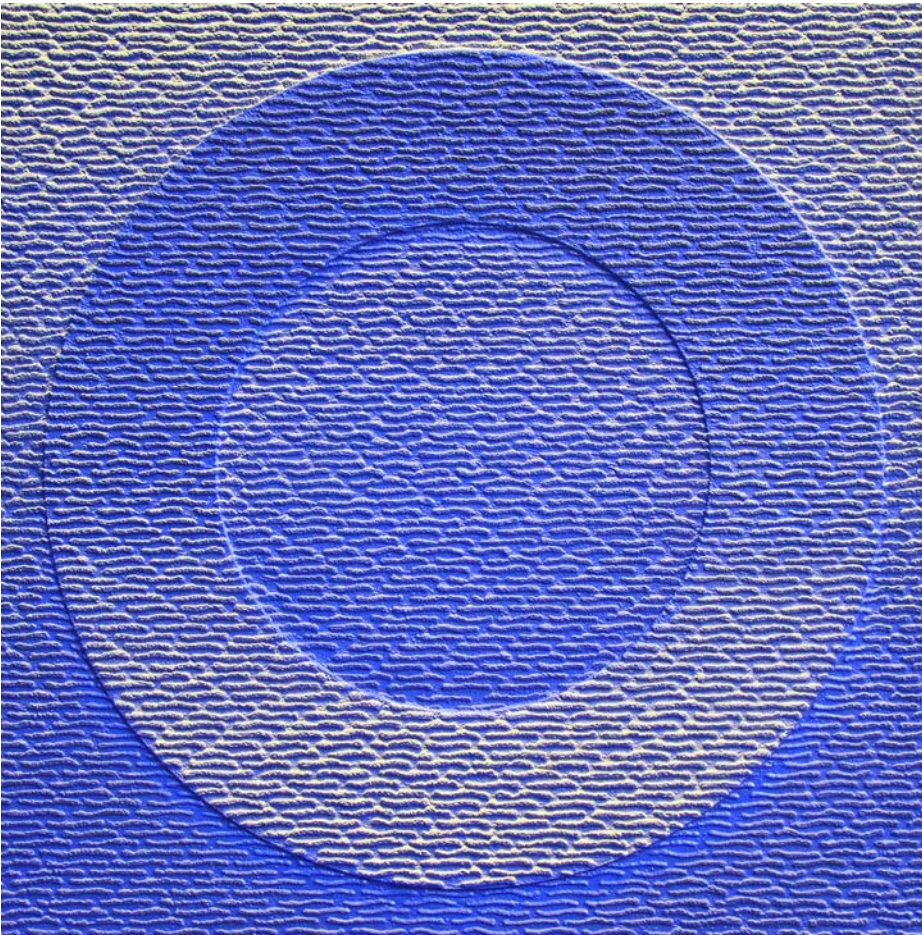
Ken Turner, 'Insect destruction'.



Janet Lynch, 'Culture Clash (Casurina shade)'. Oil on Canvas. 100x140cm



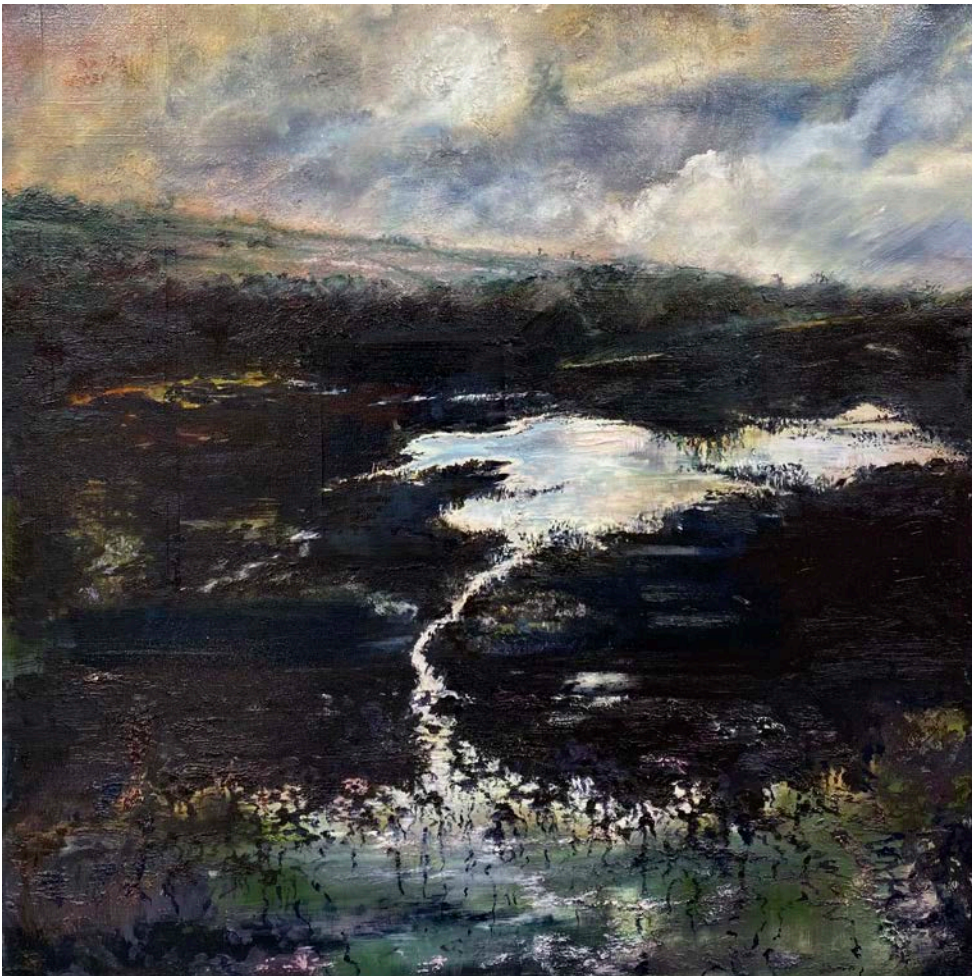
Julia Giles, 'Flow'. Feathers on paper. 103x113cm



Martha Winter, 'Forward Flow'. Sand and pigment. 122x122cm



David Westby, 'The Same Boat'. Polychrome carved and constructed wood, beaten lead sheet. 200x90x60cm (approx)



Paul Whitbread Roberts, 'Dissipation'. Oil on canvas. 60x60cm